



Pegasus e-bike kopen?

Nu vanaf 1.799 euro. Comfortabel en krachtig. Uitstekende prijs-kwaliteitsverhouding. Mantel

OPENEN

You are here Home » Articles »

Ar

ANOTHER CLIMATE SCIENTIST WITH IMPECCABLE CREDENTIALS BREAKS RANKS: "OUR MODELS ARE MICKEY-MOUSE MOCKERIES OF THE REAL WORLD"

Articles GSM

SEPTEMBER 26, 2019 CAP ALLON

Dr. Mototaka Nakamura received a Doctorate of Science from the Massachusetts Institute of Technology (MIT), and for nearly 25 years specialized in abnormal weather and climate change at prestigious institutions that included MIT, Georgia Institute of Technology, NASA, Jet Propulsion Laboratory, California Institute of Technology, JAMSTEC and Duke University.

In his book The Global Warming Hypothesis is an Unproven Hypothesis, Dr. Nakamura explains why the data foundation underpinning global warming science is "untrustworthy" and cannot be relied on:

"Global mean temperatures before 1980 are based on untrustworthy data," writes Nakamura. "Before full planet surface observation by satellite began in 1980, only a small part of the Earth had been observed for temperatures with only a certain amount of accuracy and frequency. Across the globe, only North America and Western Europe have trustworthy temperature data dating back to the 19th century."

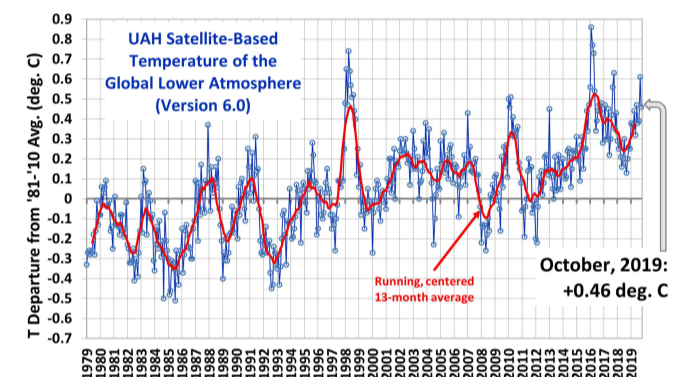
From 1990 to 2014, Nakamura worked on cloud dynamics and forces mixing atmospheric and ocean flows on medium to planetary scales. His bases were MIT (for a Doctor of Science in meteorology), Georgia Institute of Technology, Goddard Space Flight Center, Jet Propulsion Laboratory, Duke and Hawaii Universities and the Japan Agency for Marine-Earth Science and Technology.



He's published 20+ climate papers on fluid dynamics.

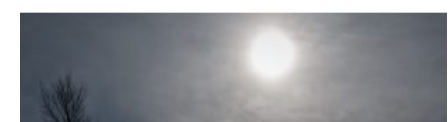
y-Mouse Mockeries of the Real World"

LATEST UAH TEMPERATURE 1979 THRU OCT 2019 (+0.46C)



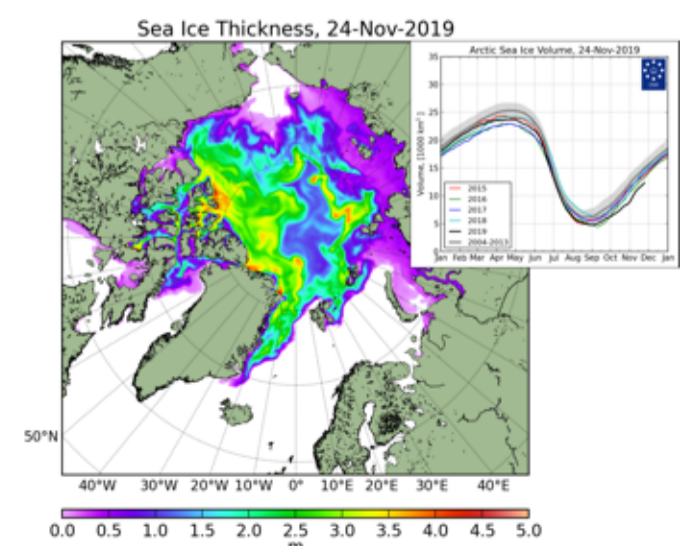
DR ROY SPENCER

NASA Predicts Next Solar Cycle will be Lowest in 200 Years (Dalton Minimum Levels) + the Implications



NASA is effectively

LATEST ARCTIC SEA ICE THICKNESS



DANISH METEOROLOGICAL INSTITUTE

LATEST GREENLAND ICE SHEET

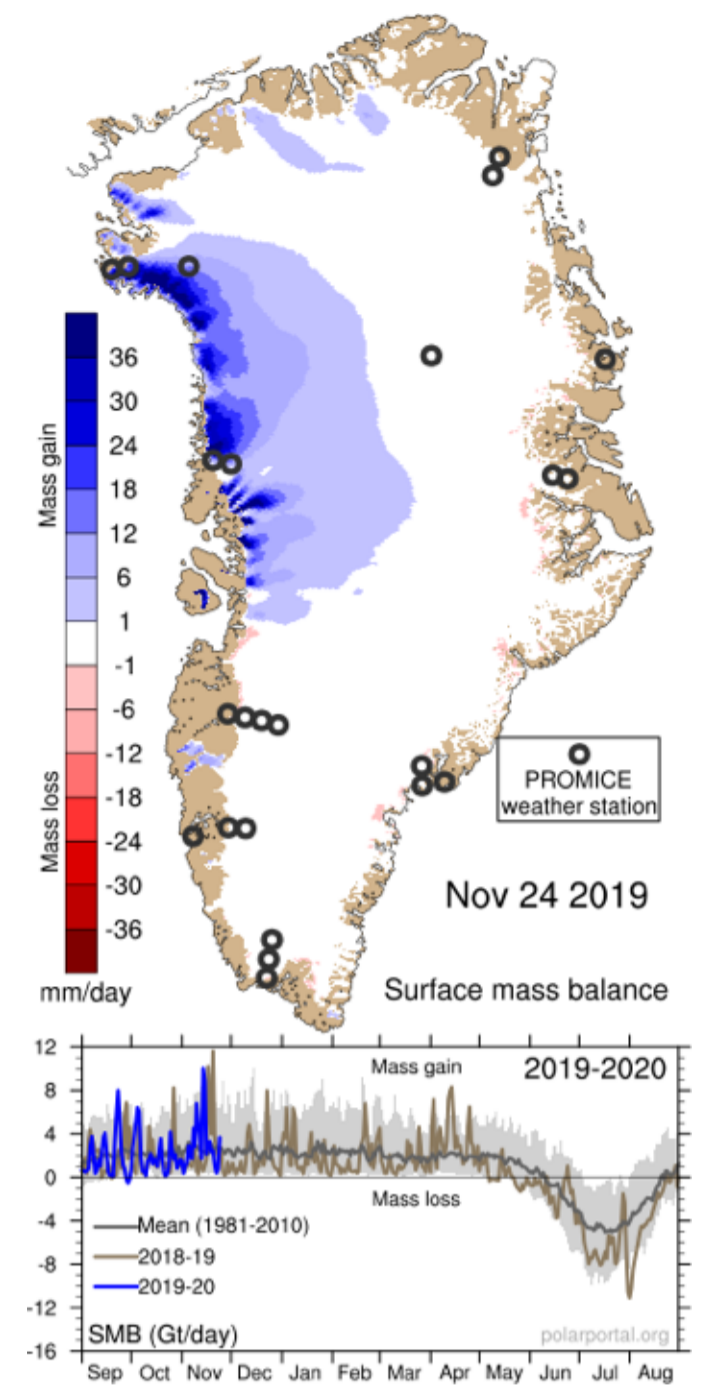


There is no questioning his credibility or knowledge.



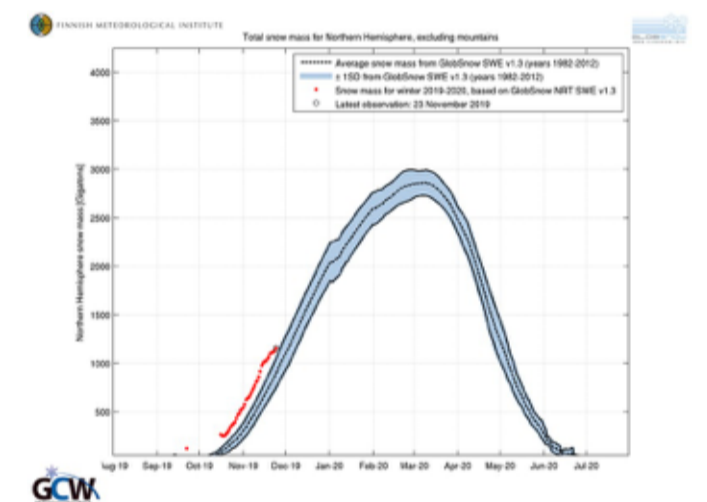
Today's 'global warming science' is akin to an upside down pyramid which is built on the work of a few climate modelers. These AGW pioneers claim to have demonstrated human-derived CO2 emissions as the cause of recently rising temperatures and have then simply projected that warming forward. Every climate researcher thereafter has taken the results of these original models as a given, and we're even at the stage now where merely testing their validity is regarded as heresy.

SMB



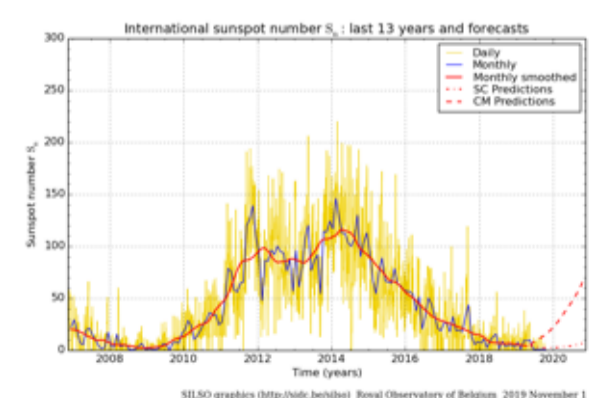
DANISH METEOROLOGICAL INSTITUTE

LATEST NORTHERN HEMISPHERE SNOW MASS TOTALS



FINNISH METEOROLOGICAL INSTITUTE

LATEST SUNSPOT NUMBER THRU OCT 2019



SIDC / SILSO

LIVE SPACE WEATHER OVERVIEW



Climate scientist Dr. Mototaka Nakamura's recent book blasts global warming data as "untrustworthy" and "falsified".

DATA FALSIFICATION

When arguing *against* global warming, the hardest thing I find is convincing people of data falsification, namely temperature fudging. If you don't pick your words carefully, forget some of the facts, or get your tone wrong then it's very easy to sound like a conspiracy crank (*I've been there, too*).

But now we have Nakamura.

The good doctor has accused the orthodox scientists of "data falsification" in the form adjusting historical temperature data down to inflate today's *subtle* warming trend — something Tony Heller has been *proving* for years on his website realclimatescience.com.

Nakamura writes: "The global surface mean temperature-change data no longer have any scientific value and are nothing except a propaganda tool to the public."

The climate models are useful tools for academic studies, he admits. However: "The models just become useless pieces of junk or worse (as they can produce gravely misleading output) when they are used for climate forecasting."

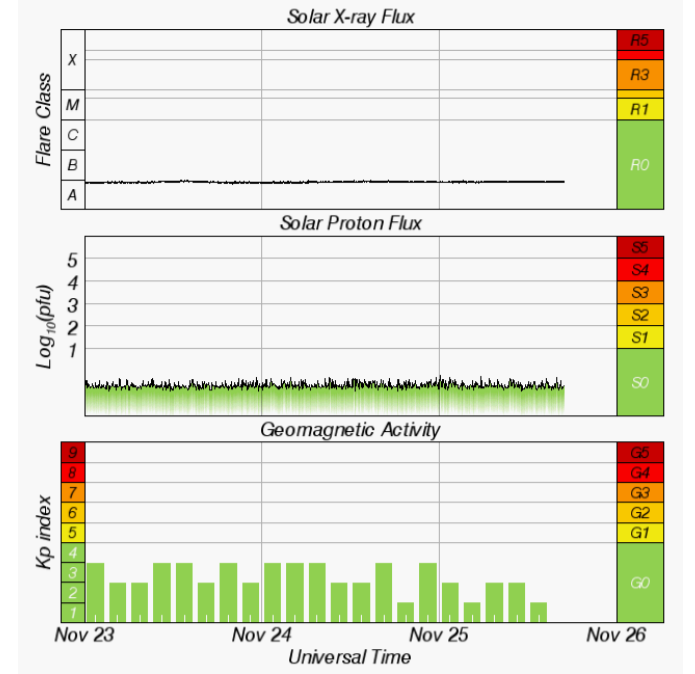
Climate forecasting is simply not possible, Nakamura concludes, and the impacts of human-caused CO2 can't be judged with the knowledge and technology we currently possess.

The models grossly simplify the way the climate works.

As well as ignoring the sun, they also drastically simplify **large and small-scale ocean dynamics, aerosol changes that generate clouds** (cloud cover is one of the key factors determining whether we have global warming or global cooling), **the drivers of ice-albedo**: "Without a reasonably accurate representation, it is impossible to make any meaningful predictions of climate variations and changes in the middle and high latitudes and thus the entire planet," and **water vapor**.

The climate forecasts also suffer from arbitrary "tunings" of **key parameters** that are simply not understood.

NAKAMURA ON CO2



SWPC / NOAA

SUBSCRIBE TO ELECTROVERSE

Recieve New Post Notifications by Email

Name

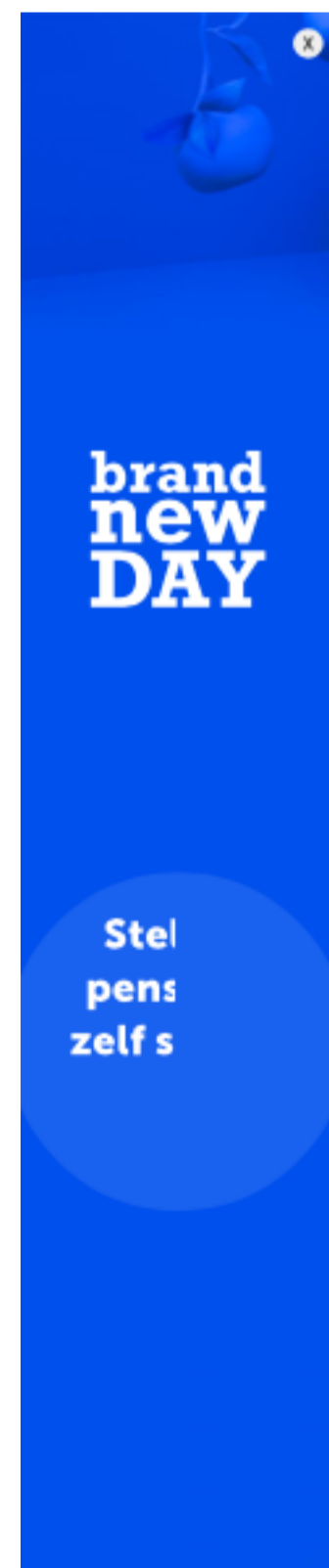
Email*

Submit

NOVEMBER 25

UK's highest recorded temperature for this day was 17C (62.6F) set at Chivenor (Devon) in 1970.

Climate is cyclic, never linear.



He writes:

“The real or realistically-simulated climate system is far more complex than an absurdly simple system simulated by the toys that have been used for climate predictions to date, and will be insurmountably difficult for those naive climate researchers who have zero or very limited understanding of geophysical fluid dynamics. The dynamics of the atmosphere and oceans are absolutely critical facets of the climate system if one hopes to ever make any meaningful prediction of climate variation.”

Solar input is modeled as a “never changing quantity,” which is absurd.

“It has only been several decades since we acquired an ability to accurately monitor the incoming solar energy. In these several decades only, it has varied by one to two watts per square meter. Is it reasonable to assume that it will not vary any more than that in the next hundred years or longer for forecasting purposes? I would say, No.”

Read Mototaka Nakamura’s book for free on [Kindle](#) — arm yourself with the facts, and spread them.

Facts such as these little nuggets (*all lifted/paraphrased from the book*):

“[The models have] no understanding of cloud formation/forcing.”

“Assumptions are made, then adjustments are made to support a narrative.”

“Our models are mickey-mouse mockeries of the real world.”

SOLAR FORCING

Solar output isn’t constant, IPCC. And the modulation of cloud nucleation is a key consequence. During solar minima, like the one we’re entering now, the sun’s magnetic field weakens and the outward pressure of the solar wind decreases. This allows more Cosmic Rays from deep space to penetrate our planet’s atmosphere. These CRs have been found to nucleate clouds ([Svensmark et al](#)). And clouds are a crucial player earth’s climate.

As Roy Spencer, PhD. eloquently writes:

“Clouds are the Earth’s sunshade, and if cloud cover changes for any reason, you have global warming — or global cooling.”

For more on that:

Cosmic Rays, Cloud Seeding and Global Cooling

“Clouds are the Earth’s sunshade, and if cloud cover changes for any reason, you have global warming or global cooling.” — Dr. Roy Spencer.



The cold times appear to be returning, in line with **historically low solar activity**.

NASA has warned that this next solar cycle (25) will be “the weakest of the past 200 years”:

Prepare (*and help support Electroverse*) by becoming a Patron and receive a **FREE Survival Tool**:

Social Media channels are actively restricting our reach. Be sure to subscribe to receive new post notifications by email (*the box is located in the sidebar >>> or scroll down if on mobile*).

Help us SPREAD OUR MESSAGE so others can survive and thrive in the coming times.

Grand Solar Minimum + Pole Shift

Cosmic Rays, Cloud Seeding and Global Cooling

“Clouds are the Earth’s sunshade, and if cloud cover changes for any reason, you have global warming or global cooling.” — Dr. Roy Spencer.



[Featured Image: Håkan Jansson/Alamy]

« Henderson, North Carolina sets new All-Time Daily Low Temperature Record for Sept 20 in Books dating back to 1893

M6.5 Earthquake Strikes 10km S of Kairatu, Indonesia »



RELATED POSTS

Articles **RESIDENT SCIENTIST EXPOSING MAINSTREAM ASTROPHYSICS — BY JAMAL S. SHRAIR, PHD**
📅 NOVEMBER 25, 2019
👤 JAMAL S. SHRAIR PHD
Every observation must follow the religion of gravity and the teachings of its holy prophets. HOW...

Articles **PROF. WILLIAM HAPPER RESIGNS OVER CLIMATE CHANGE**
📅 NOVEMBER 25, 2019
👤 POPPALOFF
Happer is famous for his comments about the world being in a CO2 “drought” and for...

Articles **Extreme Weather CALIFORNIA IS BECOMING UNLIVEABLE**
📅 NOVEMBER 25, 2019
👤 POPPALOFF
Climate Change has turned the state into a tinderbox... but once again, propaganda is pushing a...

3 THOUGHTS TO “ANOTHER CLIMATE SCIENTIST WITH IMPECCABLE CREDENTIALS BREAKS RANKS: “OUR MODELS ARE MICKEY-MOUSE MOCKERIES OF THE REAL WORLD””

Sapaud

🕒 September 27, 2019 at 1:22 am

“Another Climate Scientist with Impeccable Credentials Breaks Ranks: “Our models are Mickey-Mouse Mockeries of the Real World””

Which means these criminals want even more money to save the climate.

Reply

Storm Steiger

🕒 September 29, 2019 at 7:59 pm

I couldn't agree more with Dr. Mototaka! I have followed climate models for over 50 years. Sometimes they get lucky but 90% of the time they are incorrect! They leave out so many weather processes to be useless. Thank you for your bravery!!

Reply

Storm Steiger

🕒 September 30, 2019 at 2:59 am

I couldn't agree more with Dr. Mototaka Nakamura. I have followed climate models for over 50 years. Sometimes they get lucky but 90% of the time they are incorrect! They leave out so many weather processes to be useless. Thank you for your bravery!!

Reply

LEAVE A COMMENT

Comment

Name

Notify me of follow-up comments by email.

Notify me of new posts by email.

ADD COMMENT

[Privacy Policy](#)

[Update Privacy Preferences](#)

[Update Privacy Preferences](#)

AN ELITE CAFEMEDIA PUBLISHER

